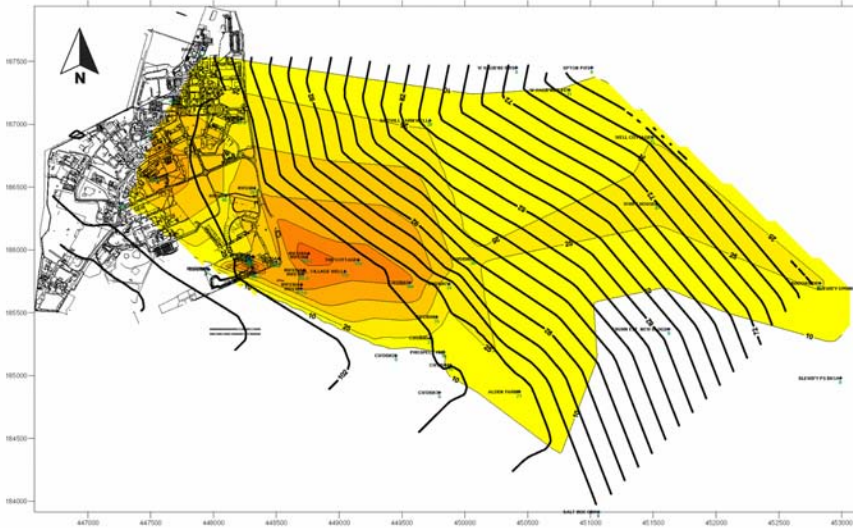


## Nuclear services - Environmental compliance services



### Issues and Opportunities

Compliance with environmental permits, licences and authorisations is an essential element of developing, operating and decommissioning nuclear facilities in the United Kingdom. Demonstrating a high degree of compliance throughout the lifecycle of a facility can require a considerable commitment of both financial and human resources. Resolution of compliance related issues has the potential to divert these valuable resources further from income generating activities.



### Entec's Approach

Entec believes that compliance-related activities should be fully integrated into business systems and should sit at the core of an organisation's culture. Our approach is based on a comprehensive understanding of the needs and aspirations of both operators and regulators. We explore, develop and implement solutions with our clients that both fulfil their commitments and allow the organisation's understanding of legislative and regulatory commitments to evolve and grow.

Compliance with legislation and associated permits, licences and authorisation delivers environmental benefits but shouldn't cost the earth! Our solutions aim to maximise the environmental, operational and reputational benefits associated with compliance whilst minimising short and long-term financial burdens. We use a range of established and bespoke techniques to allow our clients to optimise their performance. All of our techniques promote an open, transparent and auditable approach to decision making.

Strong relationships built on the basis of mutual respect and trust are key to minimising the impact of compliance related issues. We support our clients in developing and maintaining productive relationships with all stakeholders that are affected by their environmental performance.

### Outcomes and Benefits

Our efforts allow our clients to provide robust demonstration that the obligations placed on them by environmental legislation and associated permits, licences and authorisation are being fulfilled. This allows our clients to focus resources on delivering value through the development, operation and decommissioning of the nuclear facilities in their charge. The trust developed through our programmes reduces the effort required to address and respond to concerns raised by environmental regulators and the wider stakeholder community.



## Our Track Record

Entec has recently worked on compliance related programmes with a range of clients within the nuclear industry and associated regulatory community.

Project Title/Client	Project Description
<b>Waste Immobilisation and Encapsulation Plant at Dounreay (D3900)</b> BAND Alliance	Entec is undertaking the best practicable means study for the D3900 project and preparing the environment support file. We are considering the environmental elements as an integral part of the project and are supporting the design team develop a efficient and effective process that will have a minimal impact on the environment.
<b>Decommissioning Wastes BPEO.</b> Hinkley Point A	Entec undertook a BPEO study to explore strategic waste management options for all wastes likely to arise during the decommissioning of the site. The outputs of the study were used to support the close-out of a regulatory deliverable contained in the RSA93 authorisation and to support optimisation of the site's Integrated Waste Strategy.
<b>PPC Support</b> British Energy Generation Ltd	Entec provided technical support at seven BEGL stations and drafted the application sections relating to process BAT assessment, impact assessment (H1 impact assessments), application site reports, noise assessment. We also reviewed sections drafted by BEGL. Further work included assessment of air dispersion; energy use and related emissions; and environmental risks from potential accident scenarios.
<b>Landfill 42 Closure at Dounreay</b> UKAEA	Entec is examining the history of the site and exploring regulatory issues. We have undertaken the risk assessment to support the process of closing the site. We are providing advice to UKAEA throughout the regulatory engagement process that will culminate in the agreement of a closure plan between UKAEA and SEPA.
<b>Environmental Impact Assessments for the Magnox Sites</b> Magnox Electric	Entec has undertaken environmental impact assessments (EIAs) and formulated environmental impact statement (EIS) chapters relating to the Magnox power generation fleet. This been undertaken to comply with the Nuclear Reactors EIADR99 and planning requirements for new facilities under development at sites.
<b>Regulatory Assessment of BPM Studies</b> SEPA	Entec was commissioned to assess BPM studies submitted as part of the regulatory process for nuclear sites. We examined methodologies adopted for the BPM studies, the degree to which the methodologies had been followed and the context in which the output of the studies sat with relation to other strategies adopted on the site.
<b>Interim Guidance for Staff on IWS at Sellafield</b> Environment Agency	Entec worked with the Environment Agency's regulatory and policy team on the drafting of guidance on the Integrated Waste Strategy for the Legacy Ponds and Silo Project at Sellafield.

## Our Core Team

Team Member	Expertise and Experience
<b>Matthew Keep</b> Radwaste Management	Matthew has over 13 years experience gained in nuclear operations, environmental regulation and consultancy. He leads delivery of nuclear compliance projects. He has extensive knowledge of radwaste policy, legislation and associated practices.
<b>David Curwen</b> PPC	David is a specialist in PPC application, determination and implementation with 10 years of experience gained at Sellafield and in environmental consultancy. He has a comprehensive understanding application of BAT at nuclear premises.
<b>Keith Lawton</b> Environmental Management	Keith has developed broad experience of waste management and environmental management systems at nuclear premises from 8 years working in environmental regulation and environmental compliance at Sellafield.
<b>Paul Salmon</b> EIA	Paul leads delivery of environmental impact assessment programme with expert knowledge of requirements. Experience has been gained from working in industrial, nuclear and regulatory communities.
<b>Linda Ovens</b> Waste Management	Linda specialises in the development and implementation of waste strategy and tactics in the UK. She has detailed knowledge of waste management legislation and practice from 14 years experience in waste management industry and waste-related consultancy.

For further information, please contact:

Matthew Keep, London, Tel: 020 7843 1426, email: [matthew.keep@entecuk.co.uk](mailto:matthew.keep@entecuk.co.uk) [www.entecuk.com](http://www.entecuk.com)

